



SÚKROBNÁ STREDNÁ UMBELDOMÁ ŠKOLA ANIMOVANEJ TVORBY
VLAŠTEŇSKÉ NÁM. 1, 851 01 BRATISLAVA, SLOVAK REPUBLIC
www.ustsa.sk, www.ustsa.sk, ust@ustsa.sk, © 2010 SSPŠAT

Barbora Váradyová - Produktový dizajn oblečenia

Maturitná práca v odbore 8296 8 - grafický dizajn, Mesiacový rok 2009/2010



instant clothes
Melt ice



Design manual



Melt ice

Produktiv dizaj - identitaci



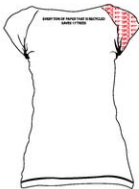
MOON FALLS
THROW AWAY ABOUT
20 PROGRAMS OF
PLASTIC EVERY YEAR
SOLUTION
THOSE WHO WORK
TO CLEAN UP
CAN SAVE 250

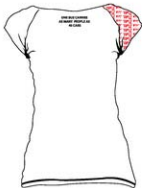


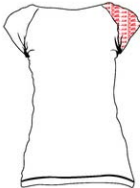














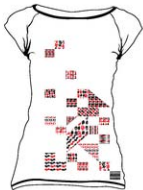














Melt ice

15 5 0 1 8 100% Cotton
www.meltice.com





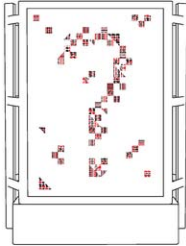


*



0











NEWS!!!!



But sleeves t-shirt

Size: XS, S, M, L, XL
 Material: 100% cotton
 Colors: white - black - red

Melt ice will make you freeze and melt at the same time. It is so cool and so hot!





How How Colored Size Help



How How Colored Size Help

How How Colored Size Help

How How Colored Size Help

[Home](#)[Shop](#)[Contact](#)[Blog](#)[Help](#)

Web Store Help

1. Customer Service
2. Exchanges
3. How Do I Know What My Measurement Is?
4. How To Place An Order
5. Is It Safe To Place My Order Online?
6. Returns
7. What Size Are The Models Wearing?
8. Where Can I Find Updates On Melt ice?
9. Why Hasn't My Payment Gone Through?

Customer Service

You are very important to us, where would we be without you? And we know you are just as excited about getting your clothing as we are about making them for you! To be sure to get the right order to you as quickly as possible, if we have made a mistake with your order then contact us straightaway at inquiries@meltice.com or on 0800-468-2003 so that we can put it right and make you happy!

For more information relating to your order, please visit the Delivery section on our website.

Exchanges

You may exchange items that are too big/small or if you would rather have another style. Please ensure that the item is unworn, unwashed and in its original condition. We cannot exchange underwear for hygiene reasons.

In brief, you will need to:

0

Typical







Collage



